



HISTORY OF ISLAMIC ARCHITECTURE IN EGYPT

*FORM ARCHITECTURAL OF
MOSQUES IN THE ISLAMIC
ARCHITECTURE*

*DR/ KAMAL MAHMOUD
ELGABALAWY*

KAMAL_ELGABALAWY@YAHOO.COM

**THE REFERENCES TO MULTIPLE SOURCES ARE TEXT & FIGURES
(SKETCHES, DRAWINGS, PICTURES, PHOTOS,...ETC.)**

ALL THE RIGHTS BELONG TO ORIGINAL AUTHORS

History of Architecture

1-Rashidun Caliphate - 632

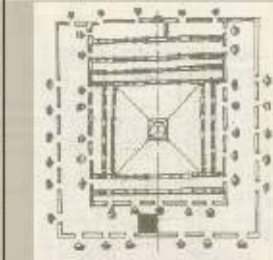
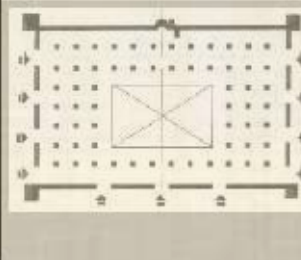
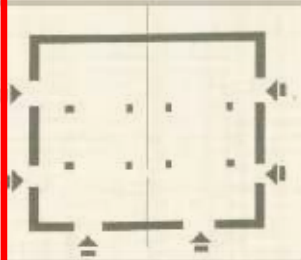
& Umayyad Caliphate-662

& Abbasid Caliphate -750

Prototype
1

Prototype
2

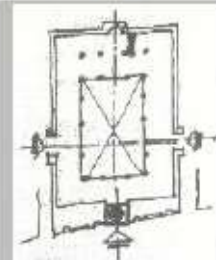
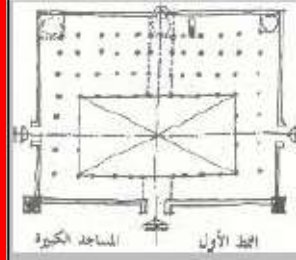
Prototype
3



2-Fatimid - 969

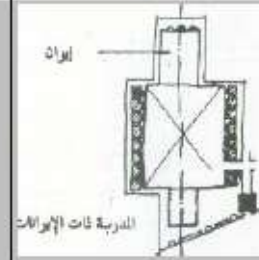
Prototype
1

Prototype
2



3-Ayoubi - 1171

Prototype
1



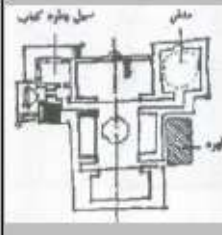
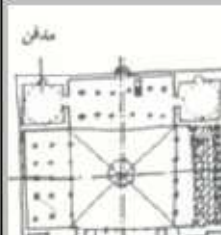
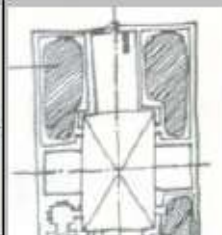
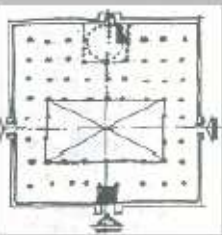
4-Mamluk - 1250

Prototype
1

Prototype
2

Prototype
3

Prototype
4

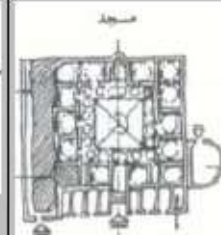
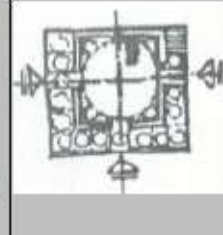
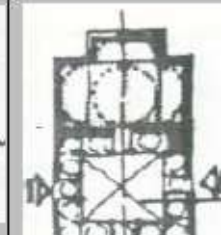


5-ottoman - 1517

Prototype
1

Prototype
2

Prototype
3



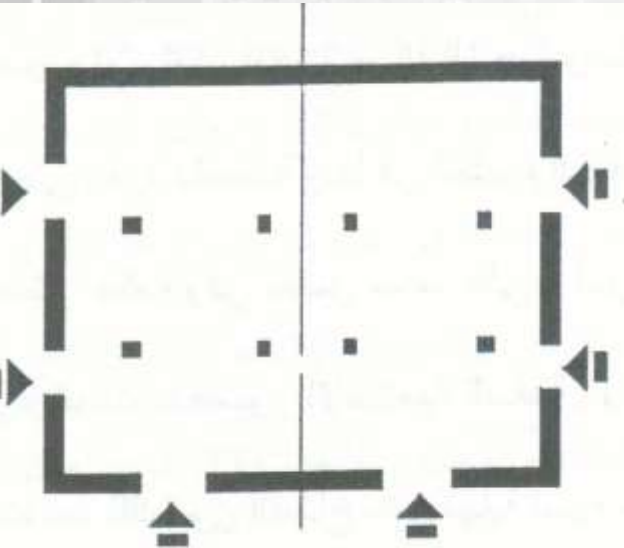
6-Mohamed Ali - 1805

Prototype
1



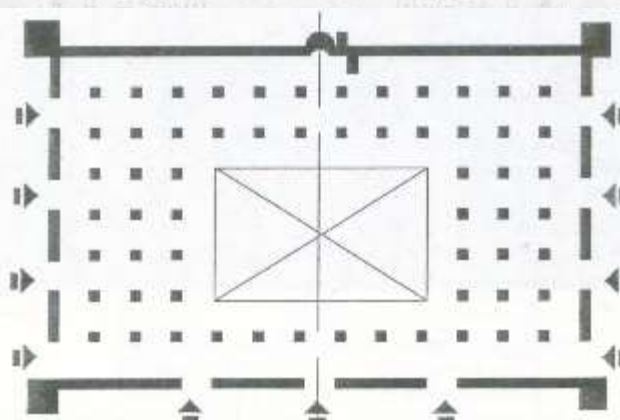
1-Rashidun Caliphate - 632

Prptptype
(1)



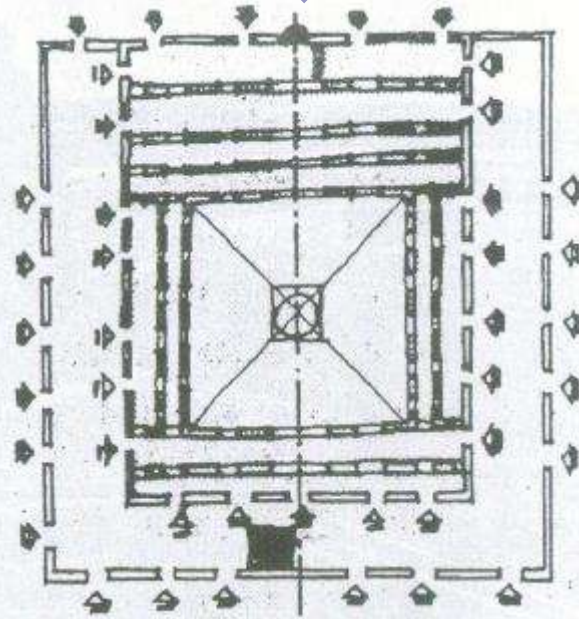
& Umayyad Caliphate-662

Prptptype
(2)



& Abbasid Caliphate -750

Prptptype
(3)



History of Architecture

1-Rashidun Caliphate - 632

& Umayyad Caliphate-662

& Abbasid Caliphate -750

Prototype 1

Prototype 2

Prototype 3

2-Fatimid - 969

Prototype 1

Prototype 2

3-Ayoubi - 1171

Prototype 1

4-Mamluk - 1250

5-ottoman - 1517

6-Mohamed Ali - 1805

Prototype 1

Prototype 2

Prototype 3

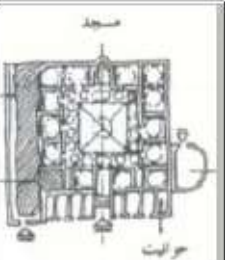
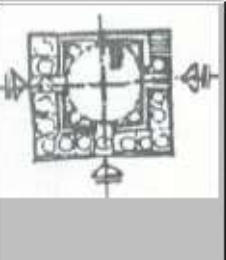
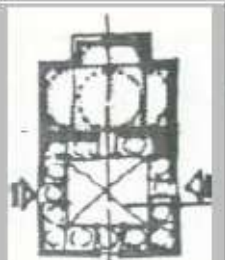
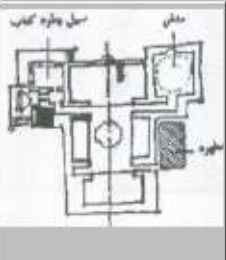
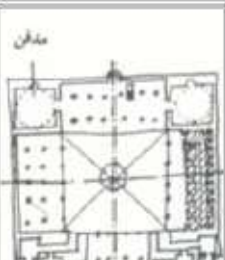
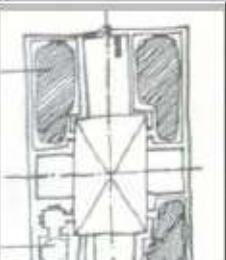
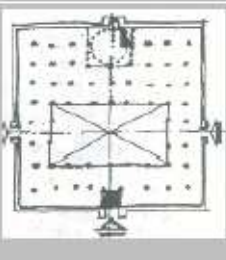
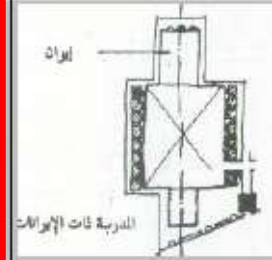
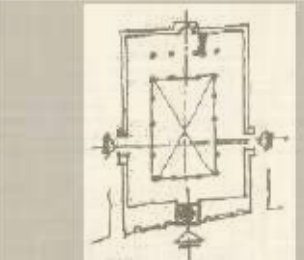
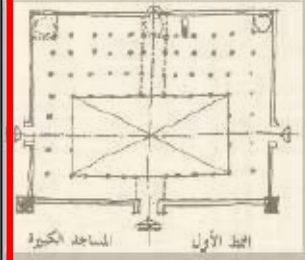
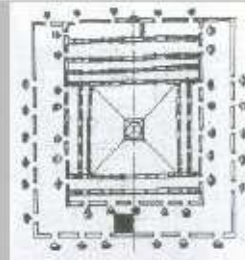
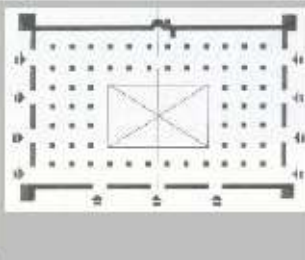
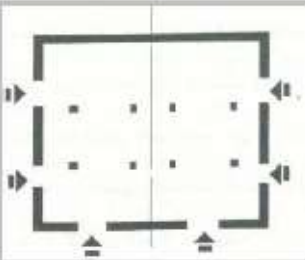
Prototype 4

Prototype 1

Prototype 2

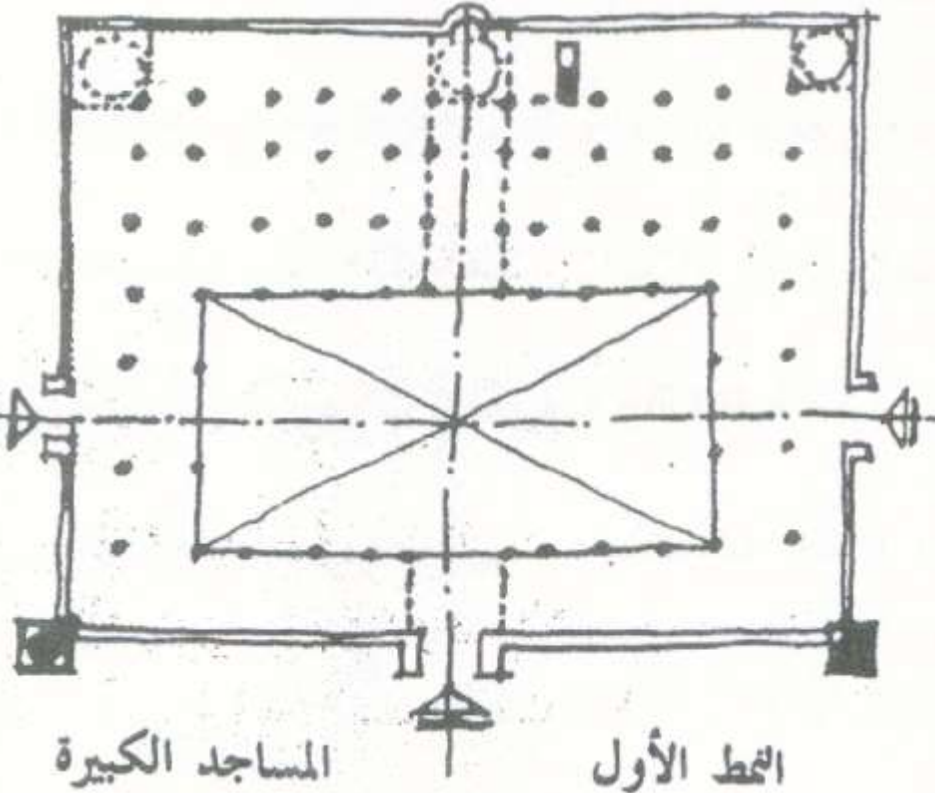
Prototype 3

Prototype 1

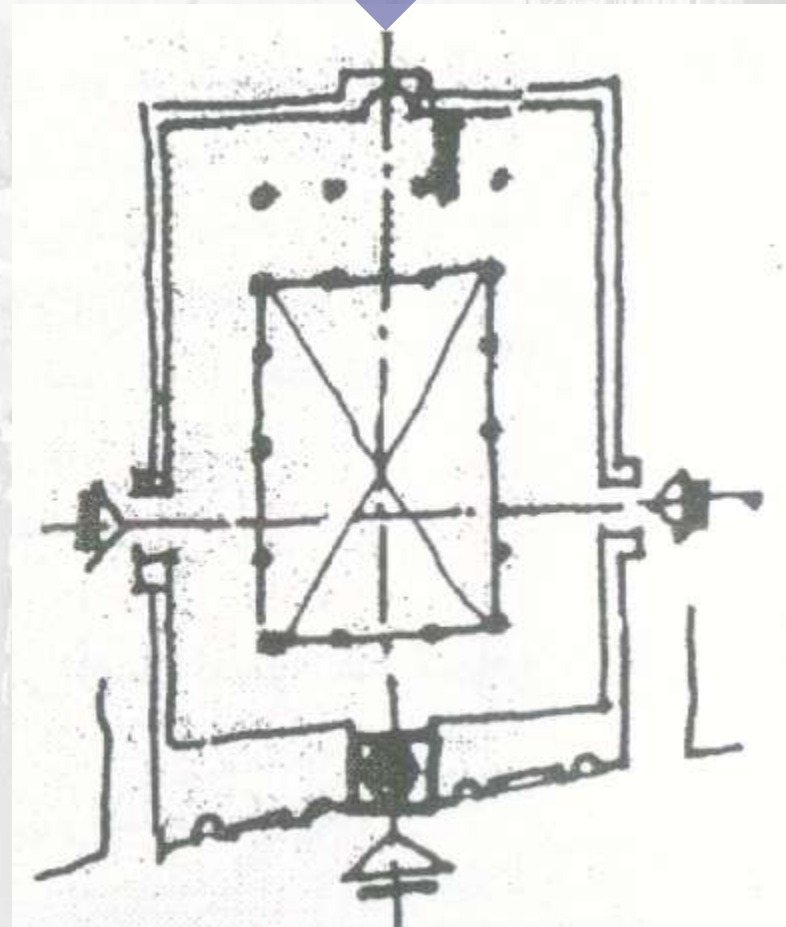


2-Fatimid period - 969

Prptptype
(1)

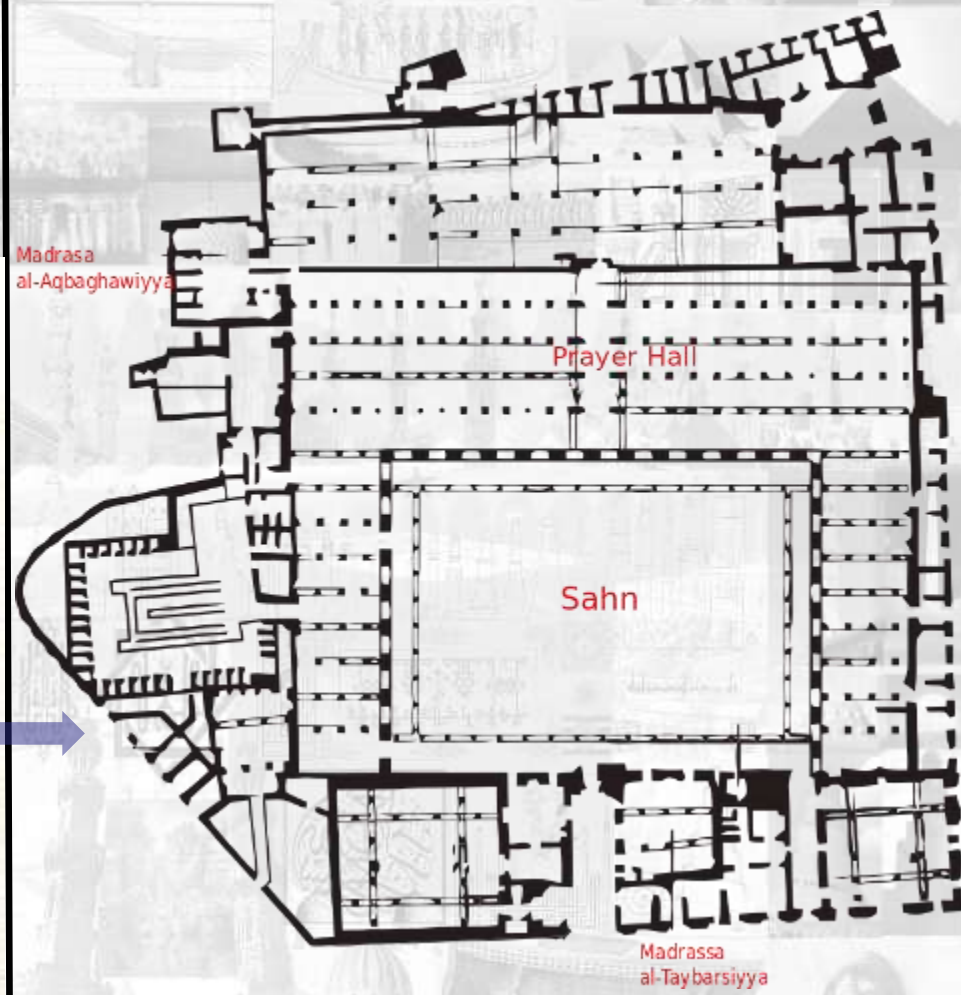
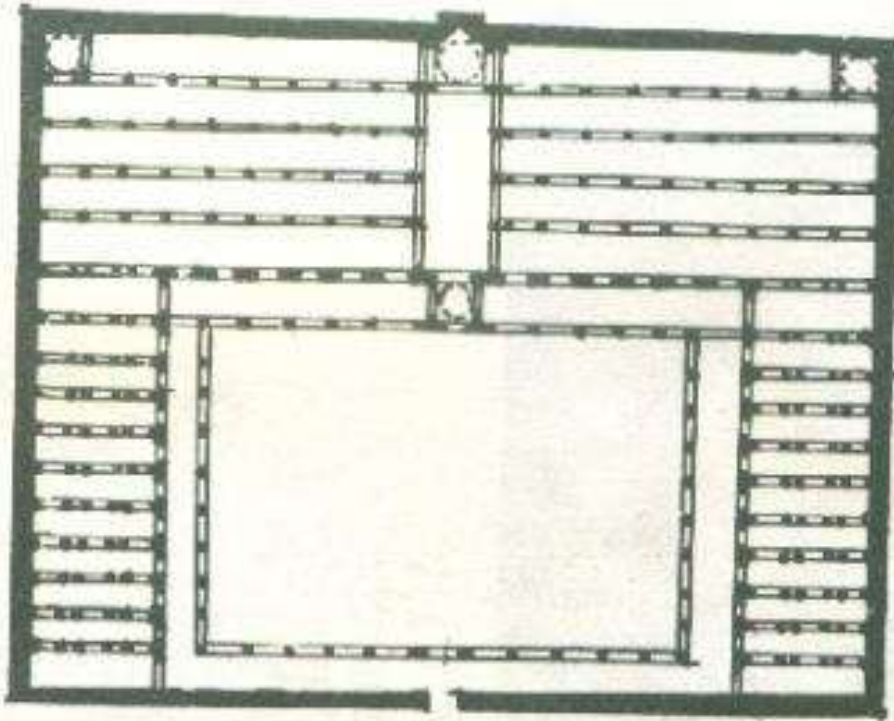


Prptptype
(2)



2-Fatimid period - 969

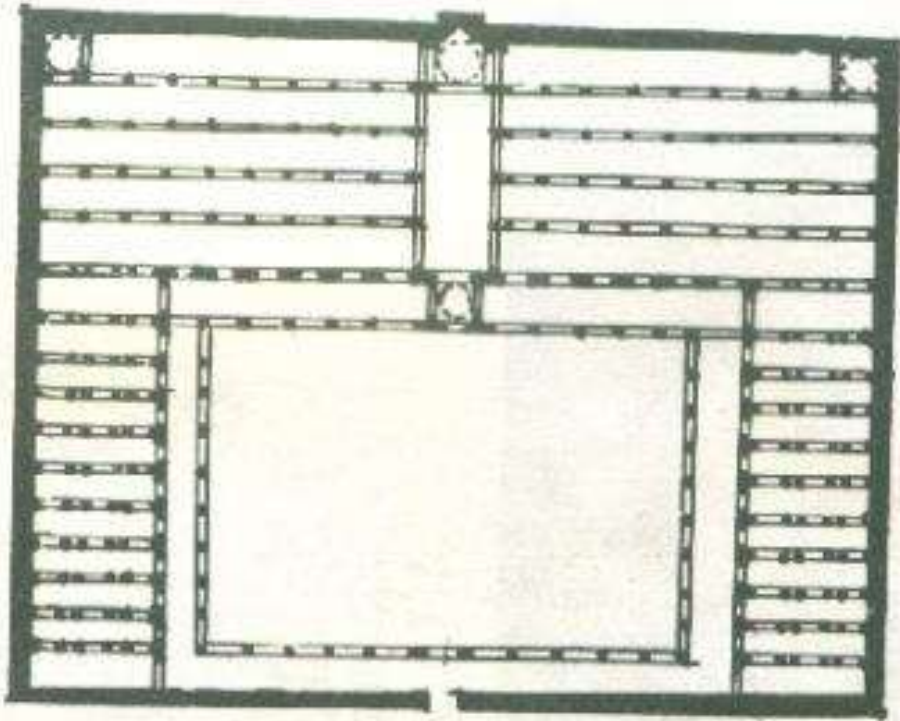
Prpttype
(1)



Floor plan of Al Azhar Mosque, Cairo

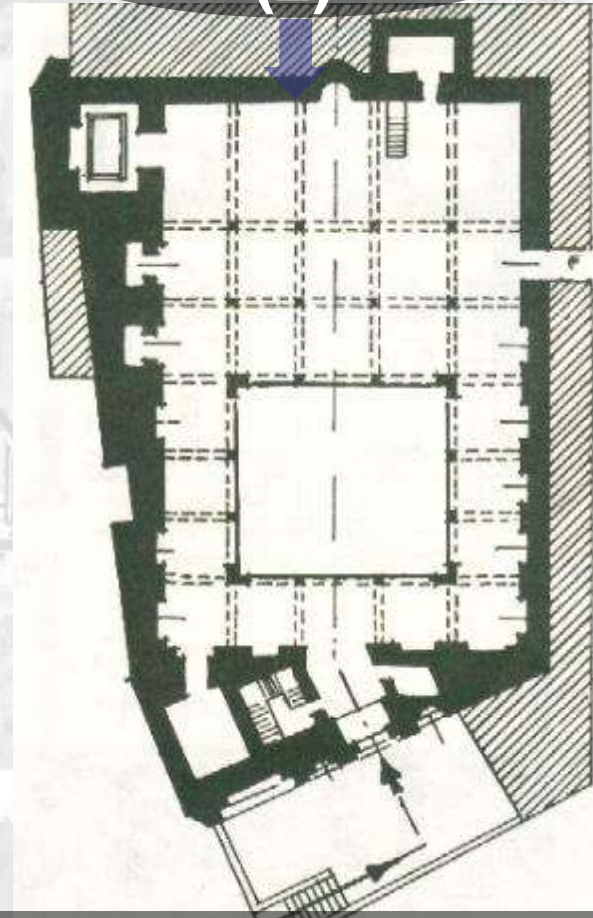
2-Fatimid period - 969

Prptptype
(1)



Floor plan of Al Azhar Mosque, Cairo

Prptptype
(2)

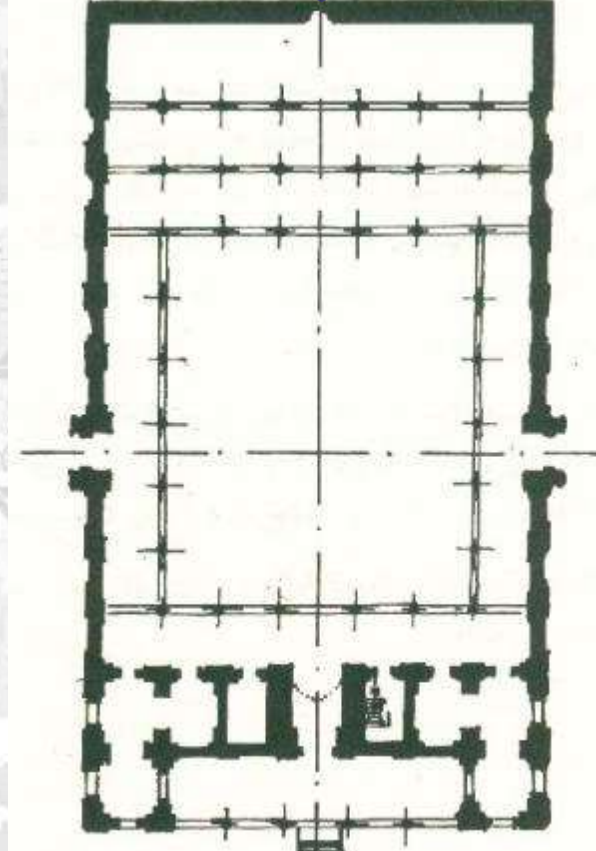
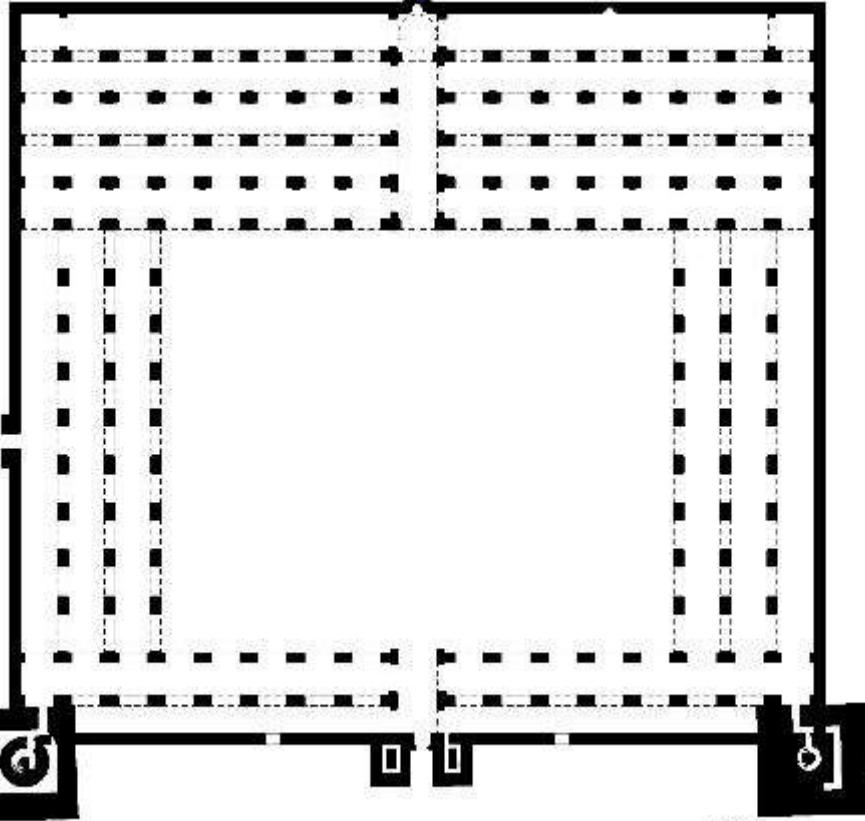


Floor plan of Aqmar Mosque, Cairo

2-Fatimid period - 969

Prptptype
(1)

Prptptype
(2)



Mosque al-Hakim

Floor plan of Al-Hakim Mosque, Cairo

Floor plan of Al-Salih Tala'i Mosque, Cairo

History of Architecture

1-Rashidun Caliphate - 632

& Umayyad Caliphate-662

& Abbasid Caliphate -750

Prototype 1

Prototype 2

Prototype 3

2-Fatimid - 969

Prototype 1

Prototype 2

3-Ayoubi - 1171

Prototype 1

4-Mamluk - 1250

5-ottoman - 1517

6-Mohamed Ali - 1805

Prototype 1

Prototype 2

Prototype 3

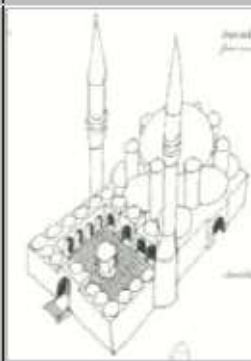
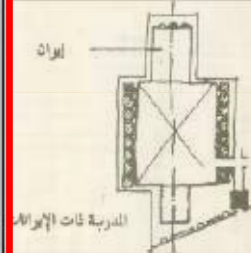
Prototype 4

Prototype 1

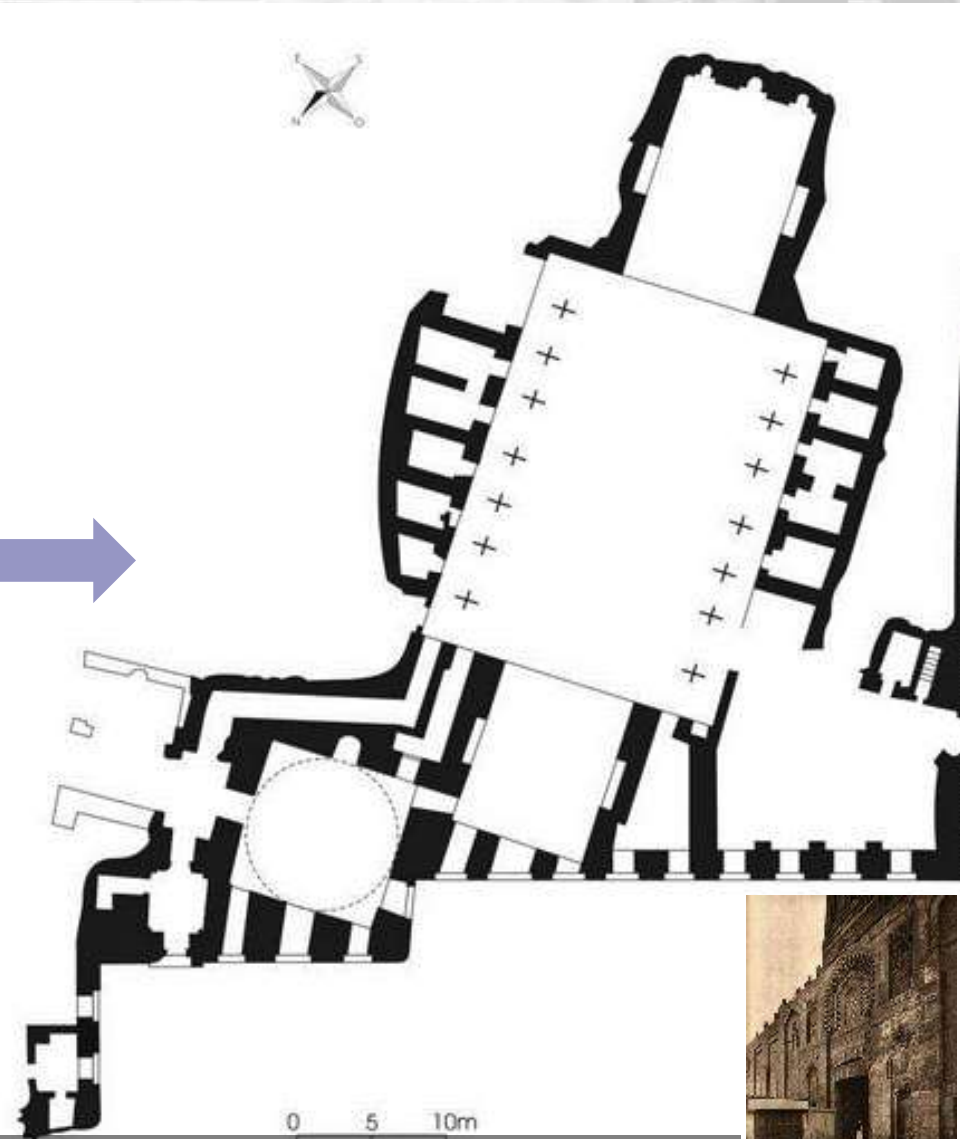
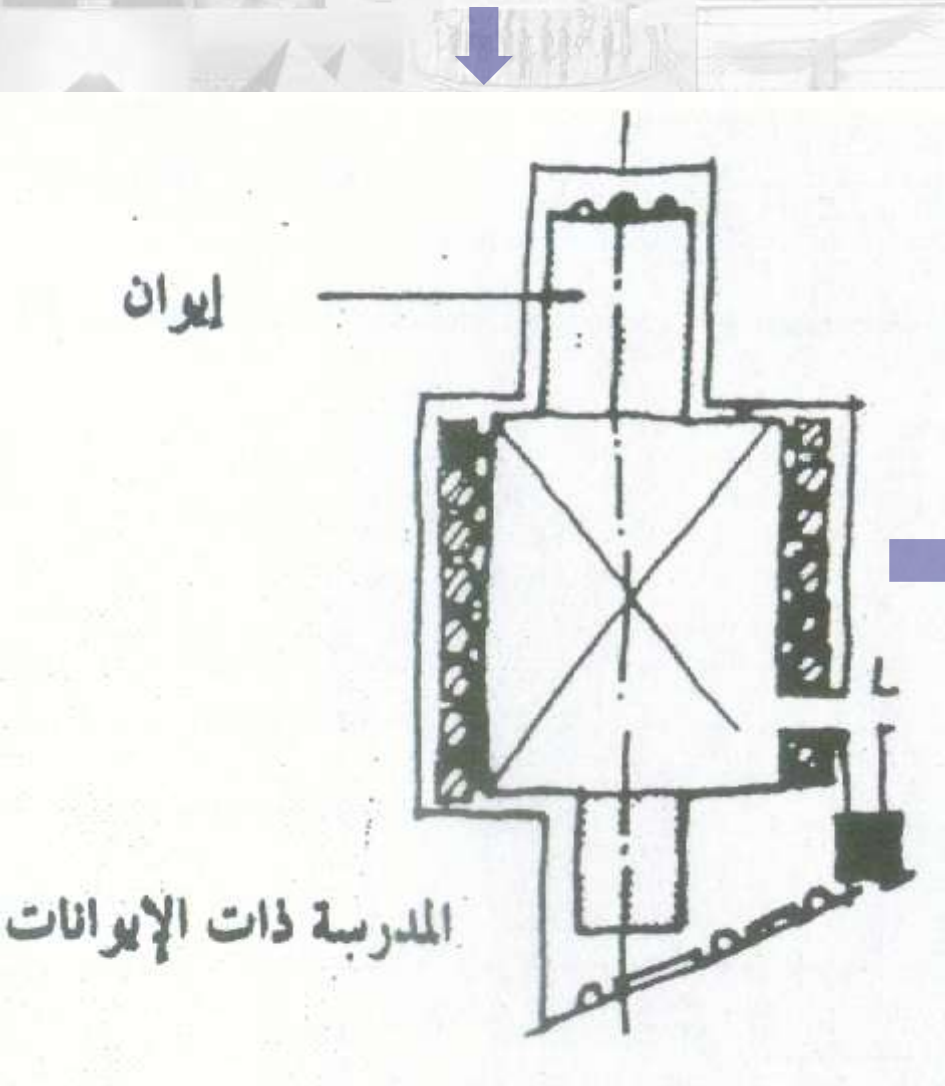
Prototype 2

Prototype 3

Prototype 1



3-Ayoubi period - 1171



The Mosque ,Madrasa & Qubbat al-Salih Najm al-Din Ayyub, Cairo

History of Architecture

1-Rashidun Caliphate - 632

& Umayyad Caliphate-662

& Abbasid Caliphate -750

Prototype
1

Prototype
2

Prototype
3

2-Fatimid - 969

Prototype
1

Prototype
2

3-Ayoubi - 1171

Prototype
1

4-Mamluk - 1250

5-ottoman - 1517

6-Mohamed Ali - 1805

Prototype
1

Prototype
2

Prototype
3

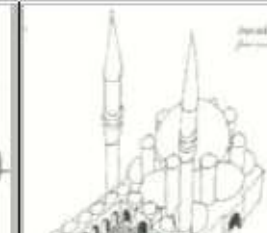
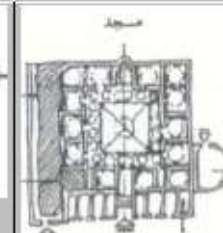
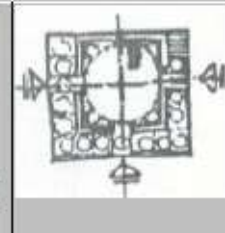
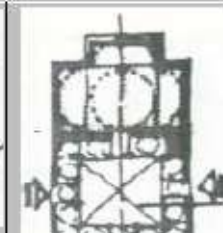
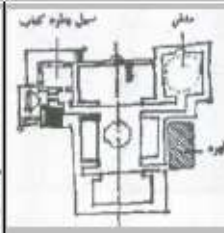
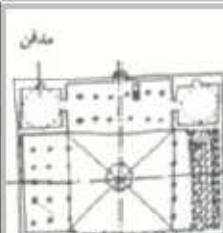
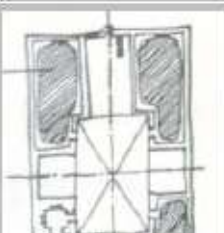
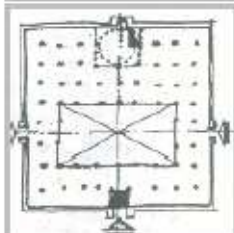
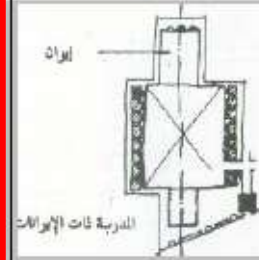
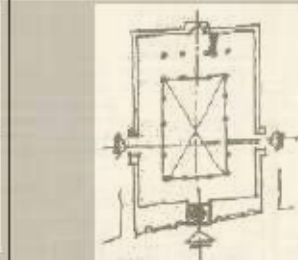
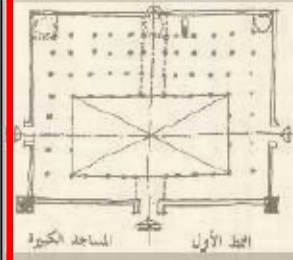
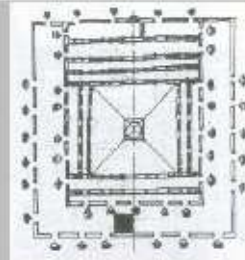
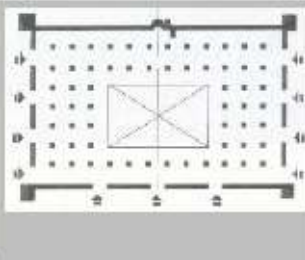
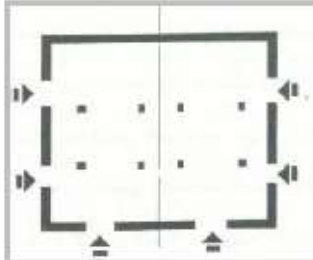
Prototype
4

Prototype
1

Prototype
2

Prototype
3

Prototype
1





HISTORY OF ISLAMIC ARCHITECTURE IN EGYPT

THANK YOU

FORM ARCHITECTURAL OF
MOSQUES IN THE ISLAMIC
ARCHITECTURE

DR/ KAMAL MAHMOUD
ELGABALAWY

KAMAL_ELGABALAWY@YAHOO.COM

**THE REFERENCES TO MULTIPLE SOURCES ARE TEXT & FIGURES
(SKETCHES, DRAWINGS, PICTURES, PHOTOS,...ETC.)**

ALL THE RIGHTS BELONG TO ORIGINAL AUTHORS